



EC145

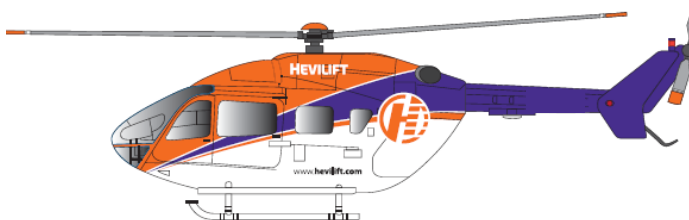
The EC145® is a twin-engine, multi-purpose helicopter in the 3-4 ton class with up to 12 seats for pilot/s and passengers, certified in accordance with EASA Part 29, with the designation BK117 C-2e. The EC145 is certified for single pilot VFR day/night operation with a new cockpit concept, increased payload and an increased pilot/s visibility in operation.

General Standard Specifications

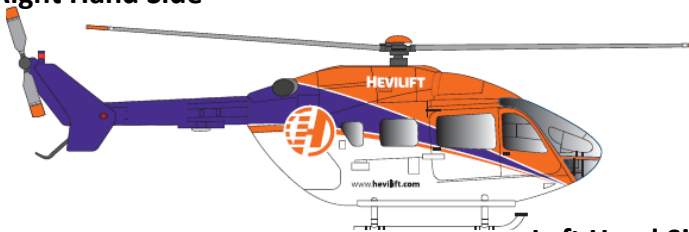
Crew	2 Pilots
Capacity	9 passengers
Minimum Width with Blades	11 m (36.09 ft)
Length with Blade	12.99m (42.65 ft)
Empty Weight	1775 kg (3915 lb)
Max Take-off Weight	3584 kg (7,903 lb)
Powerplant	2 x Turbomeca Arriel 1E2

Performance

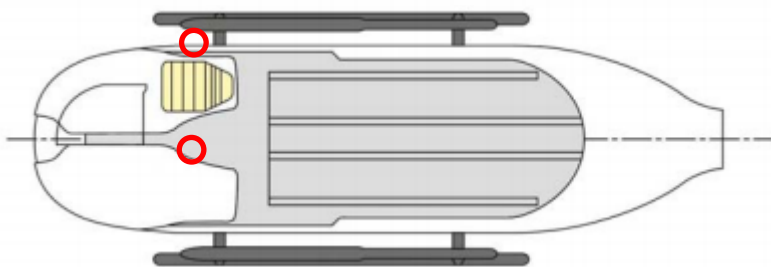
Cruise Speed	128 knots (237 km/hr)
Range	237 nm (439 km)
Max speed	150 kts (278 km/hr)
Service ceiling	5485 m (18,000 ft)
Rate of climb	14.9 m/min (2,940 ft/min)



Right Hand Side



Left Hand Side



Seating Configuration

